

FOR FAST TRACK ENTRY:
WWW.SURFACEWORLD.COM
**SURFACE
WORLD
LIVE**
2nd & 3rd March 2022
NEC, Birmingham

SURFACE WORLD

... we have
everything
covered

FEBRUARY 2022
Show Update

read online @ www.surfaceworld.com – follow us on twitter @[surfaceworldmag](https://twitter.com/surfaceworldmag) – visit www.surfaceworld.com



Your Aluminium Powder Coating Partner



Take a look at our technologies in action!

[sataluminium.com · gemapowdercoating.com]

SAT | Surface Aluminium Technologies Srl | Via Antonio Meucci, 4
37135 Verona | Italy | ph +39 045 8280601 | info@sataluminium.com
GEMA SWITZERLAND GMBH | Mövenstrasse 17
9015 St.Gallen | Switzerland | ph +41 71 313 83 00 | info@gema.eu.com

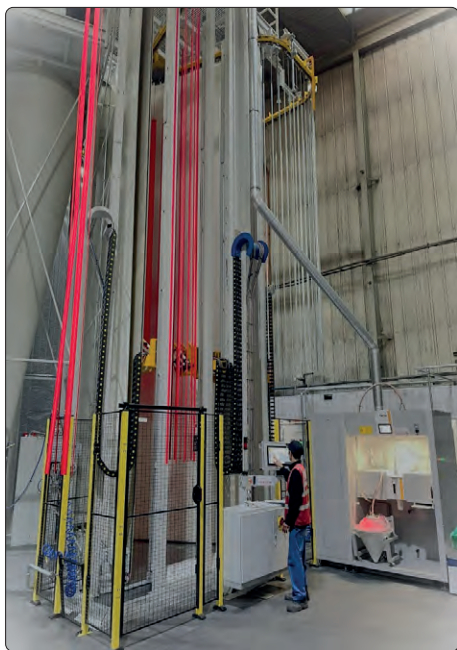
New vertical powder coating booth for Vertik-Al

The first Cube Grande installed in the UK

Vertik-Al has further enhanced the efficiency and quality of its powder coating service with the installation of a new vertical powder coating booth, the Cube Grande from SAT (Surface Aluminium Technologies) SRL, pictured below, this features Gema's renowned OC07 and SIT Dense Phase application technology.

This investment enables Vertik-Al to offer its customers the very latest and highest standards in surface finishing, including gloss, matt, metallics and textured finishes. Installed into the existing line, the booth has many benefits, not least the ability to produce more coated product due to its efficient operational capacity. This includes shorter colour changes and more targeted application, with less potential for cross contamination. As a result, output will greatly increase in line with the company's expanding customer demands.

With its revolutionary 'V' shape design and optimised layout of components, tests prove that the Cube Grande application efficiency (percentage of fresh powder directly applied on the profiles) is around 30-35% higher



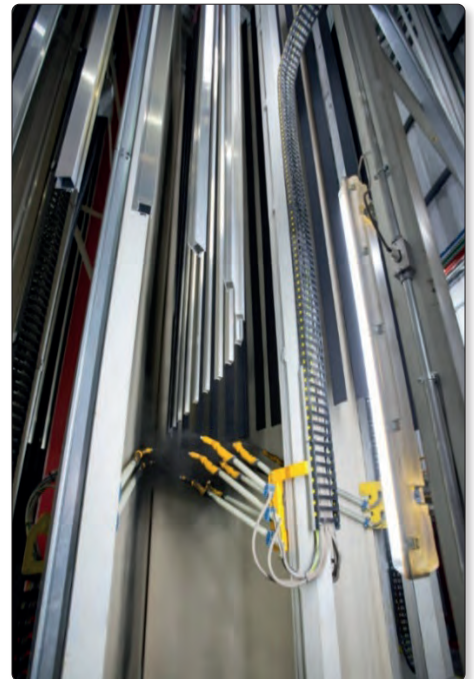
than the older designed booths. These improvements offer environmental advantages, factors which go some way to support customers in their ecological endeavours.

The vertical booth has been designed for the vertical powder coating of work-pieces, leading to a very compact installation with automatic guns, installed on a multi-arm vertical reciprocator. The booth consists of two vertical walls that surround the path of the aerial conveyor along which the powder is sprayed on the profiles. The walls are made of sliding belts that rotate and are cleaned in continuous. The exhaust air is conveyed to a high-efficiency separation cyclone through a slot placed along the line connecting the two walls; the high speed of the air in the ducts connecting the booth with the cyclone prevents the powder deposit along the circuit. The negligible quantity of powder escaped from the cyclone is caught by the final filter.

The booth allows recovering the over-spray powder by means of pneumatic valves placed at the bottom of the cyclone. The booth can also work without powder recovery. In this case the over-spray powder is caught by the cyclone and conveyed to the final filter.

Thanks to the revolutionary design of the booth (which is patented) together with an optimised layout of all the components (reciprocator, powder electrostatic spraying equipment, air extraction system, final filter), the new booth allows a big improvement of the application efficiency (percentage of fresh powder directly applied on the profiles); while an old-style booth could reach 30 to 35% transfer efficiency, many tests have proved that the transfer efficiency of the new "V" shape powder coating booth is around 60 to 65%.

As with the Cube Grande, the horizontal powder coating system utilise Gema automation and gun technology and provide the very best efficiencies in powder consumption and superior quality coatings. Regarding the electrostatic equipment – thanks to the partnership between SAT and Gema – the booth is provided with GEMA



SAT "Cube Grande" - powder coating booth

Powder Center model OptiCenter OC07 with 16 GEMA Automatic guns model OptiGun GA03-P with 60° angled heads.

This is the fourth in a series of multimillion pound planned investments for the powder coating specialist that Gema UK have supported. In recent years, Vertik-Al has also installed two Magic Compact horizontal powder coating plants and an upgrade of an existing horizontal line at its Birmingham-based facility. Investment such as this enables Vertik-Al to uphold its commitment to quality and maintain its reputed high standards.

For more information on the latest innovations from Gema please contact uk.sales@gema.eu.com or call 01202763942